



## SHOP EQUIPMENT

**Professional Products – Forged to Withstand the Toughest Environments.**

Borroughs has a long history of making the best shop equipment in the industry. We started manufacturing shop equipment in the late 1940's and many of those items are still in use today. Our shop equipment offerings include work benches, technician carts, professional work stations, wall mounted cabinets, tool boxes, modular drawer cabinets, racks and specialty desks. Each of these products combines heavy duty construction with superior fit and finish and includes a 5 Year Limited Warranty. American made – and the highest quality.



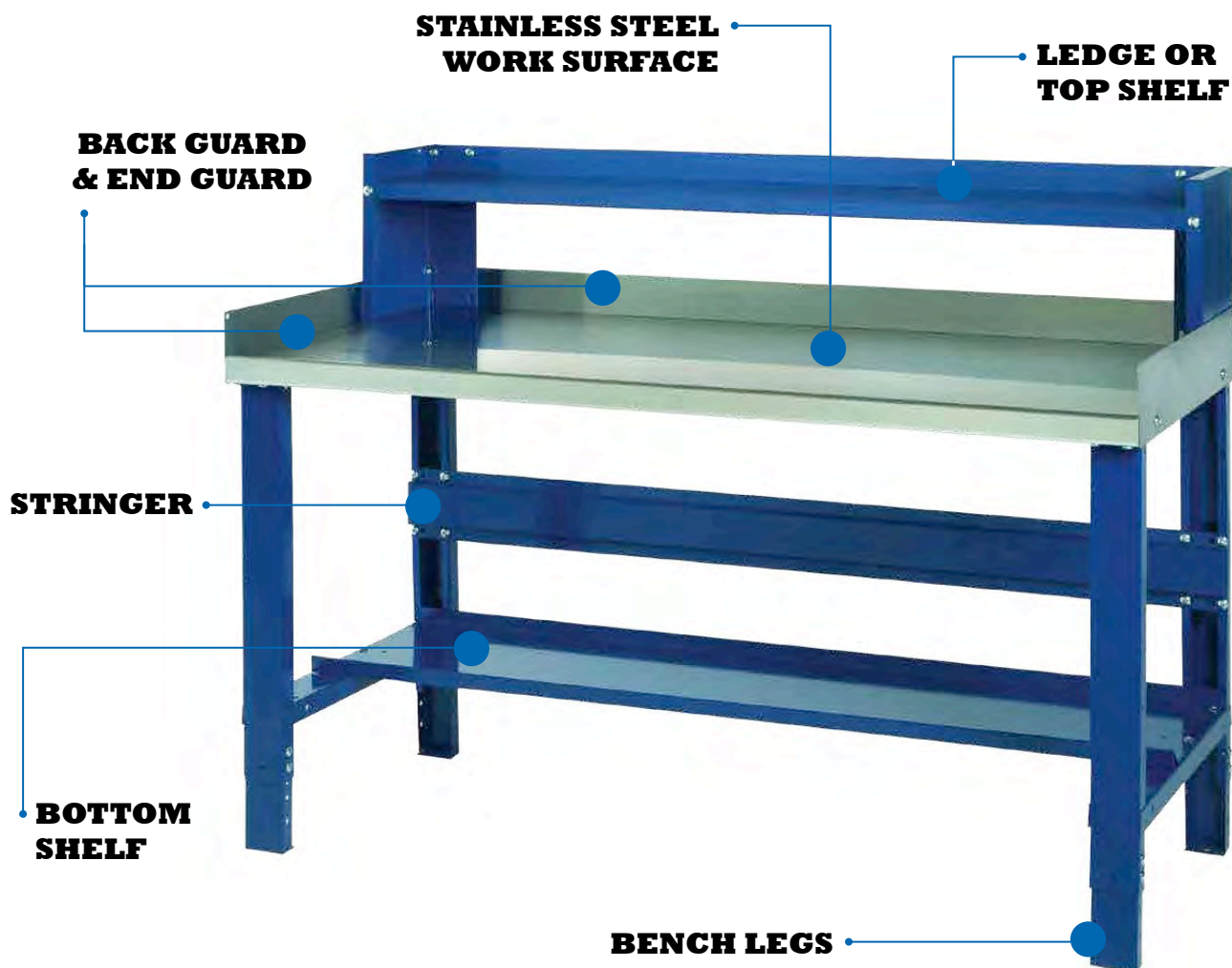
*WTL 200 Series Benches offer great, enclosed storage for automotive professionals.*



Scan this QR Code to download  
**WB 100 Series Work Bench**  
installation instructions.

## WORK BENCHES

Whether you need a basic open leg work bench or a complete integrated workstation, Borroughs has a work bench to fit your needs. Borroughs work benches are constructed of heavy gauge steel and are designed for durability. Work benches can be customized by adding accessories.



### BORROUGHS BENCH TOP SELECTIONS (see page 114 for details)

- MT – Solid Hard Wood Top
- LM – Laminate Top
- RL – Radius Edge Laminate top
- MD – Multi-Duty Wood Top
- SD – Static Dissipative Top
- PW – Pressed Wood on Steel Top
- SS – Stainless Steel Top



Having trouble choosing a work bench for your needs? Contact our Customer Service Team today. We will help work with you get the right bench for your needs. **1-800-748-0227 x4801**

## PRECONFIGURED WORK BENCHES

All open work benches include a steel top. To order with a stainless steel top, just add "SS" to the end of the catalog number. To order other upgraded tops—contact your account representative.



See following pages for various work bench components and their individual gauges of steel.



### 100 SERIES

PART #	W x D
WB100	48" x 28"
WB101	48" x 34"
WB102	60" x 28"
WB103	60" x 34"
WB104	72" x 28"
WB105	72" x 34"



### 120 SERIES

PART #	W x D
WB120	48" x 28"
WB121	48" x 34"
WB122	60" x 28"
WB123	60" x 34"
WB124	72" x 28"
WB125	72" x 34"



### 130 SERIES

PART #	W x D
WB130	48" x 28"
WB131	48" x 34"
WB132	60" x 28"
WB133	60" x 34"
WB134	72" x 28"
WB135	72" x 34"



### 160 SERIES

PART #	W x D
WB160	48" x 28"
WB161	48" x 34"
WB162	60" x 28"
WB163	60" x 34"
WB164	72" x 28"
WB165	72" x 34"

### PORTABLE KIT

Consists of foot supports and four easy-rolling 4" diameter casters (two are braking). Stems are easily bolted to foot plates with special threaded stems, and can be attached to a Borroughs Bench at any time to provide complete mobility.

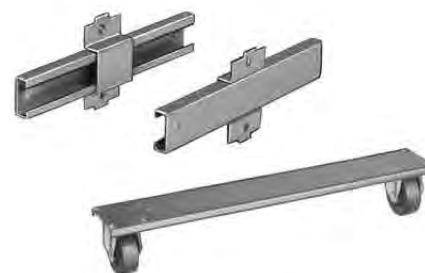
#### 400 lb. capacity each caster



PART #	Size
14845-000	4" diameter

### SEMI-PORTABLE KIT

Kit includes two wheels with leg cleat and two handles for opposite end of bench. Leg, with wheel assembly, is adjusted to a shorter position than handle end. The handles telescope.



PART #	Size
14854-000	28" and 34"

### LEVELING SCREW

Allows for easy height adjustment and leveling of the unit on irregular and uneven surfaces. Each leg adjusts independently without having to tip the unit. Sold in pairs.



PART #	Description
14825-000	Leveling Screw



## COMPONENTS & ACCESSORIES

### LEDGE OR TOP SHELF

Keeps tool boxes, testing equipment, etc., off working surface. Pierced for bolting to back guard or top. Can be tiered to provide shelf-on-shelf arrangement.



PART #	W x H
14851-000	48" x 10"
14851-001	60" x 10"
14851-002	72" x 10"

### STRINGER

Eliminates sway and adds rigidity to work bench. Attaches to the back two legs. May also be used as a shelf backstop. Stringer is 5" high with 3/4" flanges. One required for each bench.



PART #	WIDTH
14827-000	48"
14827-001	60"
14827-002	72"

### FOOT REST

Use in place of a bottom shelf on open work benches, adding extra rigidity. Bolted to cross rails of leg assemblies - box channel design.



PART #	WIDTH
14879-000	48"
14879-001	60"
14879-002	72"

### BOTTOM SHELF

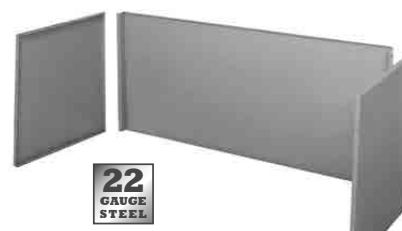
Made of heavy-gauge steel, 15" deep, with a formed lip in front and a 1" flange in back. Attaches to cross rails of work bench legs.



PART #	W x D
14826-000	48" x 15"
14826-001	60" x 15"
14826-002	72" x 15"

### ENCLOSURE PANELS

Encloses bench for protection of stored materials.



PART #	W x H
<b>BACK PANEL</b>	
14853-000	48" x 21"
14853-001	60" x 21"
14853-002	72" x 21"
<b>END PANEL (SETS OF TWO)</b>	
14852-000	28" x 34"

### WORK BENCH LEG

The Borroughs work bench leg allows for height adjustment from 27<sup>1/2</sup>" to 36" on 1" centers (first adjustment 1<sup>1/2</sup>"). Work surfaces can be set at most comfortable height to reduce fatigue and improve productivity. In the future, benches can be reconfigured as personnel turn over or the needs of your business change. Fits 28" and 34" benches.

PART #	Size
14828-000	Adjustable height 27 1/2" to 36"

### BACK GUARD & END GUARD

Back guards prevent material from falling off bench at rear. Project 3" above bench top and are punched for bolting to bench top and ends.



PART #	WIDTH
<b>BACK GUARD</b>	
14824-000	48"
14824-001	60"
14824-002	72"
<b>END GUARD (SETS OF TWO)</b>	
14822-000	28"
14822-001	34"

### STAINLESS STEEL BACK GUARD ASSEMBLY

PART #	WIDTH
14818-003-000	48"
14818-004-000	60"
14818-005-000	72"

### STAINLESS STEEL END GUARD ASSEMBLY

PART #	DEPTH
14822-003-00	28"





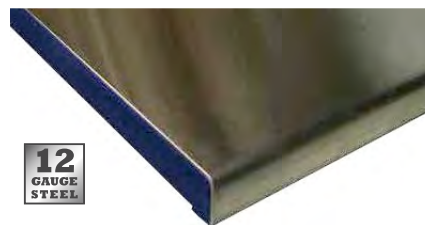


## WORK BENCH TOPS



Your choice of work bench tops is essential for maximum safety and performance. Our range of top materials has been selected specifically to provide the flexibility you need.

### STAINLESS STEEL TOPS



Heavy gauge stainless steel tops with channel formations front and rear. Includes stringer.

PART#	W x D x H
14820-S03	48" x 28"
14856-S02	60" x 28"
14857-S02	72" x 28"

### SOLID HARD WOOD TOPS



Ideal for electrical, woodworking, tool-making and instrument work. Sanded satin smooth and has a lacquer finish.

PART#	W x D x H
00428-061	48" x 28" x 1 3/4"
00434-061	48" x 34" x 1 3/4"
00528-061	60" x 28" x 1 3/4"
00534-061	60" x 34" x 1 3/4"
00628-061	72" x 28" x 1 3/4"
00634-061	72" x 34" x 1 3/4"

### PRESSED WOOD ON STEEL TOPS



Facing of 1/8" treated hardboard in natural finish bonded to a standard steel top. Includes stringer.

PART#	W x D x H
14883-000	48" x 28" x 1 7/8"
14883-001	48" x 34" x 1 7/8"
14883-002	60" x 28" x 1 7/8"
14883-003	60" x 34" x 1 7/8"
14883-004	72" x 28" x 1 7/8"
14883-005	72" x 34" x 1 7/8"

### MULTI-DUTY WOOD TOPS



A warp-and splinter-proof top made of composite wood core and faced on both sides with tempered hardboard.

PART#	W x D x H
00428-062	48" x 28" x 1 3/4"
00434-062	48" x 34" x 1 3/4"
00528-062	60" x 28" x 1 3/4"
00534-062	60" x 34" x 1 3/4"
00628-062	72" x 28" x 1 3/4"
00634-062	72" x 34" x 1 3/4"

### STATIC DISSIPATIVE TOPS

Top is composed of special static dissipative almond-colored high pressure laminate, with a rounded front edge, over medium density industrial-grade particle board.

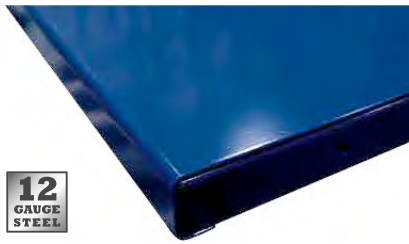


PART#	W x D x H
11019-000	48" x 28" x 1 3/4"
11019-001	48" x 34" x 1 3/4"
11010-002	60" x 28" x 1 3/4"

PART#	W x D x H
11019-003	60" x 34" x 1 3/4"
11019-004	72" x 28" x 1 3/4"
11019-005	72" x 34" x 1 3/4"

## WORK BENCH TOPS

### STEEL TOPS



Heavy-duty steel top which won't absorb oil or dirt. Features channel formations front and rear. Includes stringer.

PART#	W x D x H
14881-S00	48" x 28" x 1 3/4"
14881-S01	48" x 34" x 1 3/4"
14881-S02	60" x 28" x 1 3/4"
14881-S03	60" x 34" x 1 3/4"
14881-S04	72" x 28" x 1 3/4"
14881-S05	72" x 34" x 1 3/4"

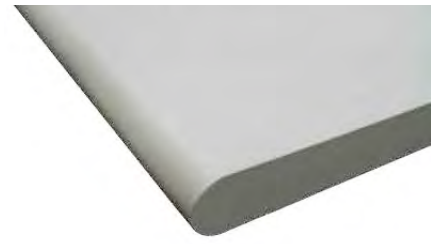
### LAMINATE TOPS



High pressure laminate in a grey linen-look finish over medium density industrial-grade particle board.

PART#	W x D x H
11020-000	48" x 28" x 1 5/8"
11020-001	48" x 34" x 1 5/8"
11020-002	60" x 28" x 1 5/8"
11020-003	60" x 34" x 1 5/8"
11020-004	72" x 28" x 1 5/8"
11020-005	72" x 34" x 1 5/8"

### RADIUS LAMINATE TOPS



Almond colored high pressure laminate over industrial grade particle board. Radius front edge provides improved aesthetics and user comfort.

PART#	W x D x H
11018-000	48" x 28" x 1 3/4"
11018-001	48" x 34" x 1 3/4"
11018-002	60" x 28" x 1 3/4"
11018-003	60" x 34" x 1 3/4"
11018-004	72" x 28" x 1 3/4"
11018-005	72" x 34" x 1 3/4"





## WALL MOUNTED SHOP PRODUCTS

### WALL MOUNT BENCH

Borroughs' wall mount bench fastens directly to the wall and needs no contact with the floor. No legs get in the way or create hard to reach places where dirt and refuse collect.



PART #	W x D
WMB300	48" x 28"
WMB302	60" x 28"
WMB304	72" x 28"
WMB305	72" x 34"

Scan this QR Code to download Wall Mounted Work Bench installation instructions.



### WALL MOUNT LEG

Wall mount leg is available for existing or custom bench tops. Sold in pairs and requires steel attachment channels for use with wood or laminate tops.



PART #	Size
<b>Wall Mount Leg</b>	
11000-000	28" & 34" deep
<b>Steel Attachment for Wall Mount Leg</b>	
14813-000	28"
14813-001	34"

### WALL MOUNT CABINET

Mounts conveniently to walls. Swing doors and adjustable center shelf maximize efficient storage space. Key lock for security. Shown with standard top.



16 GAUGE STEEL

PART #	W x D x H
11114-000	36" x 13" x 27"

### WALL MOUNT CABINET ANGLED TOP KIT

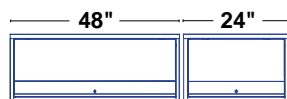


16 GAUGE STEEL

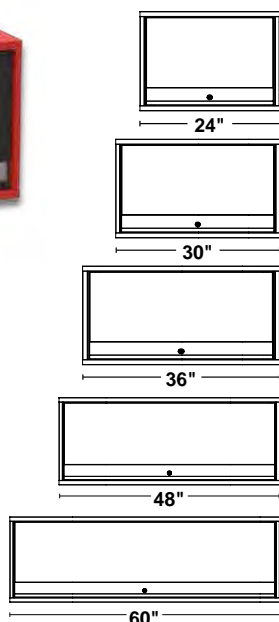
PART #	W x D x H
11125-000	36" x 13" x 6"

### UPPER CABINETS

- Strongest cabinets in the industry
- Tip-Up, slide in doors allow single-hand operation
- Soft close feature helps longevity of cabinets
- Can be mounted atop riser frame or can be wall mounted



Sample configuration



PART #	Description – W x D x H
A1-241819UPC	Upper Cabinet 24" x 18" x 19"
A1-301819UPC	Upper Cabinet 30" x 18" x 19"
A1-361819UPC	Upper Cabinet 36" x 18" x 19"
A1-481819UPC	Upper Cabinet 48" x 18" x 19"
A1-601819UPC	Upper Cabinet 60" x 18" x 19"

\*Upper Cabinets can also be mounted to wall, rather than using riser frame.



## TECHNICIAN BENCHES

### TAPER LEG ENCLOSED BENCHES, SERIES 200-300

Choose your preferred work surface (painted steel is standard). The full length cabinet features a 500 lb. capacity adjustable center shelf, standard sliding doors and a key lock. No exposed hardware. Caster base is recommended for the 28" high to ensure proper height work surface.

**12**  
GAUGE  
STEEL

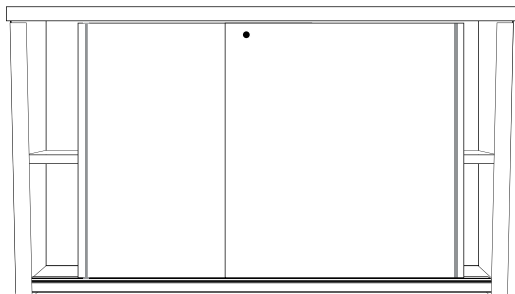


\* Add "SS" to any WTL part number for *Stainless Steel Tops*

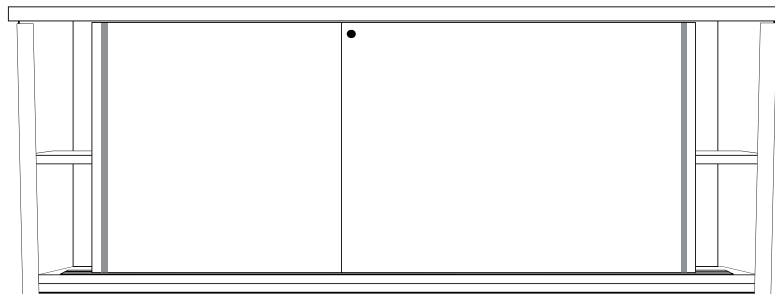
PART #	W x D x H
WTL200	48" x 28" x 28"
WTL202	60" x 28" x 28"
WTL204	72" x 28" x 28"
WTL300	48" x 28" x 34"
WTL302	60" x 28" x 34"
WTL304	72" x 28" x 34"

- No exposed hardware
- Heavy-duty steel legs and work surface
- Optional work surfaces available
- Available in widths of 48", 60" and 72"
- Full-length enclosed under bench cabinet
- Adjustable center shelf holds up to 500 lbs
- Sliding doors with key lock standard
- Full-length top and bottom door tracks

#### 200 SERIES\*:



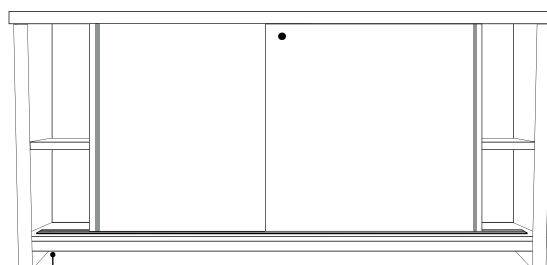
#### 300 SERIES:



### WTL BENCHES, SERIES 350

The 350 Series has all the features of the 200 and 300 series. The 350 Series has an elevated bottom shelf and shorter doors (28") for cleaning underneath the bench.

PART #	W x D x H
WTL350	48" x 28" x 34"
WTL352	60" x 28" x 34"
WTL354	72" x 28" x 34"



*Elevated bottom provides easier cleaning underneath bench.*

### CASTER BASE

- 11 gauge welded steel tube construction.
- Sturdy, wide-profile casters rated for 600 lb. capacity.



**11**  
GAUGE  
STEEL

PART #	WIDTH
11147-000	48"
11147-001	60"
11147-002	72"

## SPECIALTY BENCHES

### ENCLOSED TECH BENCH, SERIES 300

Available with painted or stainless steel top. The full length cabinet features a 500 lb. capacity adjustable center shelf. Doors must be ordered separately.



12  
GAUGE  
STEEL

PART #	W x D x H
WCL300	48" x 28" x 34"
WCL302	60" x 28" x 34"
WCL304	72" x 28" x 34"

### LOCKING SLIDING DOOR KIT SERIES 300



12  
GAUGE  
STEEL

PART #	WIDTH
WSDL300	48"
WSDL302	60"
WSDL304	72"

## SHOP FURNITURE

### COUNTER UNIT WITH STAINLESS STEEL TOP

Our Quicklane counter is designed for efficiently storing fast moving small or medium-size parts, and is great for retail and tech counters. The lower shelf is ideal for storing fluids and bulky items.



PART #	W x D x H
HDC8424	84" x 25" x 39"
HDC7224	72" x 25" x 39"

### TRANSMISSION TEAR-DOWN BENCH

The 48" x 28" angled top, with plastic catch bin, keeps transmission and engine repair messes contained. The bin removes easily for dumping fluid. Adjustable leg height. Two rigid and two locking casters.

PART #	Descriptions
11106-001	stainless steel top
11106-000	painted steel top



Scan this QR Code to download  
**Transmission Tear-Down  
Bench** assembly instructions.



Shown with optional  
Tier Drawer (page 109)